

blue

# Unlocking the Complexity of Course Evaluations at Medical Schools

---

**Centralize evaluation data in one system and continuously improve medical programs**

The Blue experience management platform enables medical schools to automate and run multiple evaluation projects simultaneously for increased process efficiency.

- Multi-instructor course evaluations
- Instructor evaluation of student performance
- Traditional evaluations for first-year courses
- Student evaluation of clinical rotations
- Feedback on residency

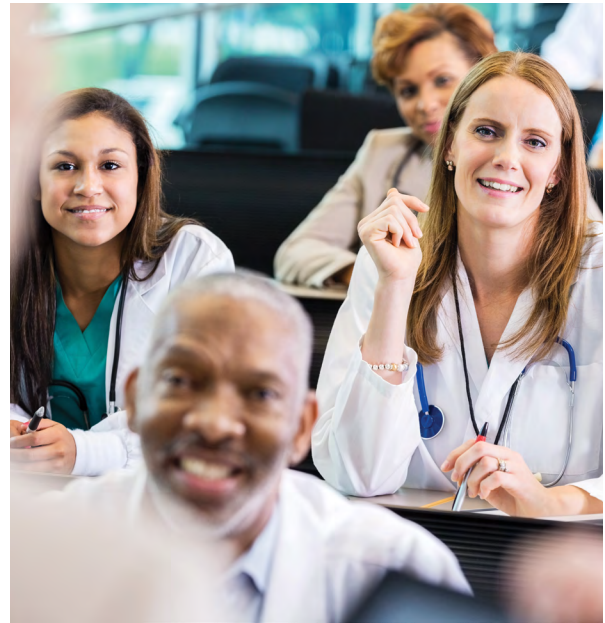
## Support your unique evaluation processes that focus on student success and institutional improvement

### Enhance Medical Education Programs

Faculty and administrators do not have time to track down data. Through Blue, medical schools can collect data from multiple teaching sites to provide valuable insights for improvement.

### Streamline Accreditation Initiatives

Access all your evaluation data and reports from one system to streamline the accreditation process.



## Key Highlights



### Automated Evaluations

Automatically schedule evaluations by synchronizing your student records and calendaring systems with Blue.



### Flexible Reporting

Generate aggregate and comparative reports at all level, view live response data, and group results by instructor, site, or course.



### Text Analytics

Tap into your qualitative data and obtain a complete picture of student feedback.



### Fully Accessible

Meet the latest accessibility standards for WCAG 2.1 (AA) and Section 508, and provide a seamless experience to all.



### IT Integration

Through its best-in-class integration capabilities, Blue synchronizes all IT systems for increased efficiency and intelligent decision-making.

### Medical Schools using Blue for course evaluations

Texas A&M HSC College of Medicine | Tufts University School of Medicine | University of Michigan College of Medicine | Oregon Health & Sciences University